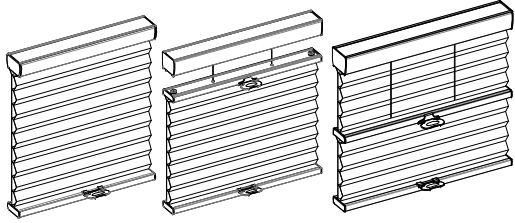


N300750-2  
65101-10249-B

## Installation Instructions Honeycomb Shades

**Cordless & Cordless TDBU & Cordless Day & Night**



### Getting Started

Remove shade from package. Save packaging until shade is installed and working to your satisfaction.

#### Tools:

- Level
- Measuring Tape
- Pencil
- Power drill
- (1/4" hex driver and drill bit)
- Screwdriver

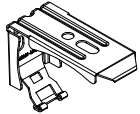


You will need to use the following fasteners for your particular mounting surface.

Surface	Fastener
Wood	#8 1 1/4" Screws (Provide) #6 3/4" screws
Drywall/Plaster	Wall Anchors, Expansion Bolts (Not Provide)
Metal	Sheet Metal Screws (Not Provide)

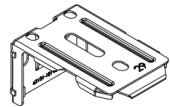
### Check Component/Hardware:

Installation Bracket

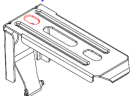


(Cordless)

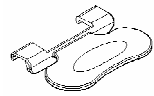
3/8"S, 9/16"S, 3/4"S & 1/2"D



(Cordless TDBU / Day & Night)



1 1/4" S & 3/4"D  
(Cordless/TDBU/Day & Night)



Handle



Hold Down bracket  
(optional)

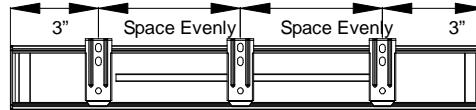
### Hardware Standard Quantity

Order Width (X)	X ≤ 39"	39" < X ≤ 66"	66" < X ≤ 93"	93" < X ≤ 120"
Installation Bracket	2	3	4	5
Handle	1pcs for X ≤ 50", 2pcs for X > 50" (Cordless) 2pcs for X ≤ 50", 4pcs for X > 50" (Cordless TDBU & Day & Night)			
1 1/4" Screw for Installation Bracket	4	6	8	10
Hold Down Bracket (Optional)	2	2	2	2
Spacer (Optional)	1pc for extend distance 10mm 2pcs for extend distance 18mm			
2" Screw for Installation Bracket with spacer (Optional)	4	6	8	10
3/4" Screw for Hold Down Bracket (Optional)	4	4	4	4

Note: Optional flat head screws included.  
Use as needed.

### Step 1: Bracket Installation

- Measure 3" from both ends of the head rail. Mark the bracket location on the mounting surface



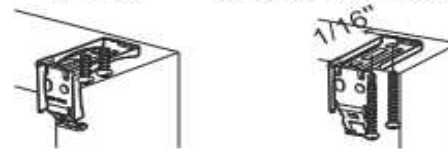
### Inside Mount

- For Cordless, align wall to the front of brackets.
- For Cordless TDBU & Day & Night, allocate a min. distance of 1/16" from wall to the front of brackets.
- For 1 1/4"S & 3/4"D, allocate a min. distance of 1/8" from wall to the front of brackets.
- Use two 1 1/4" mounting screws to secure brackets. Use wall anchors for drywall or plaster wall.

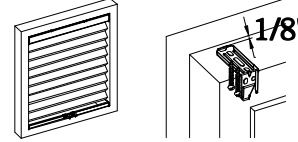
For 3/8"S, 9/16"S, 3/4"S & 1/2"D

(Cordless)

(Cordless TDBU / Day & Night)



For 1 1/4"S & 3/4"D



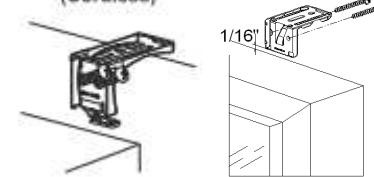
### Outside Mount

- Align the end of brackets with the top window frame.
- Use two #8 1 1/4" mounting screws to secure brackets. Use wall anchors for drywall or plaster wall.

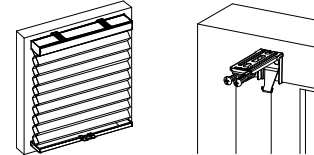
For 3/8"S, 9/16"S, 3/4"S & 1/2"D

(Cordless)

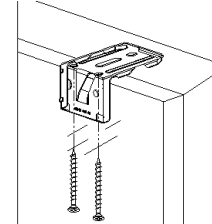
Cordless TDBU / Day & Night



For 1 1/4"S & 3/4"D



\* For shallow mounting, using 2pcs of flat head screw to secure the bracket as below



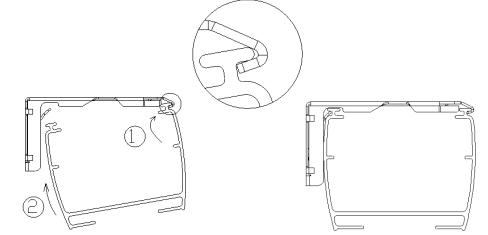
(3/8"S, 1/2"D, 9/16"S, 3/4"S)

### Step 2: Shade Installation

- Position head rail at an angle so that it is hooked to the front of the bracket. Then push it upward to snap into the bracket.

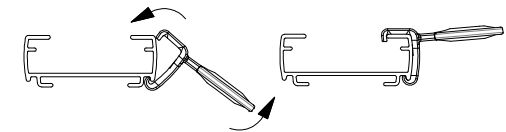
⚠ For proper installation, start with attaching the front rail to the bracket.

⚠ For easier installation, move the middle rail of cordless TDBU a little bit off before installing the headrail.

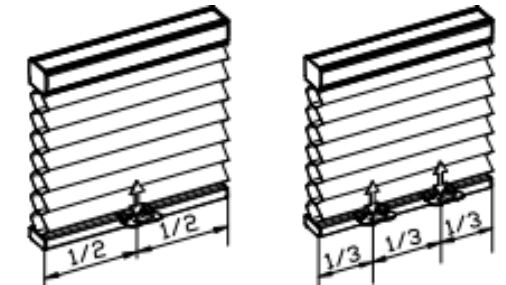


### Step 3: How to Install Shade Handle

Position the handle at angle so that it is hooked to the bottom of the bottom rail. Then push it upward to snap into place.



### Shade Operation



To lower the shade, gently pull down the shade on the bottom rail handle and stop at the desired location.

For TDBU & Day & Night, pull down the bottom rail first before lowering the middle rail.

To raise the shade, gently raise the shade on the bottom rail handle to desired height.

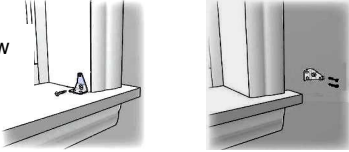
For TDBU & Day & Night, if the shade will not lift, pull the midrail down fully to the bottom first and then raise up bottom rail together with midrail.

⚠ Do not grasp the rail unevenly. Always lower or raise the shade in the middle or use both hands with even pressure to two handles of the rail.

## How to Install Hold Down (if applicable)

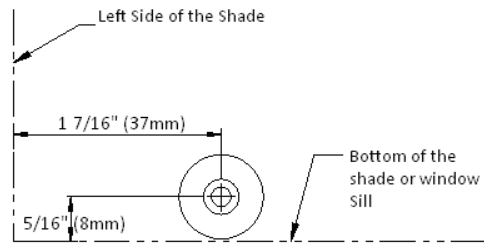
### A. For Hold Down Bracket.

Use #6 3/4" screw to secure each bracket.



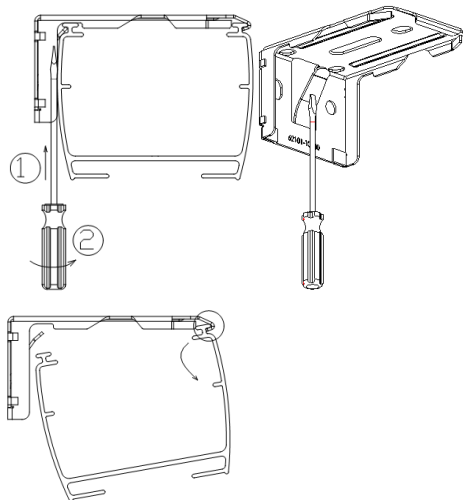
### B. For Magnetic Hold Down

Use M3x15mm screw to secure the magnet catch at the below location. Make sure the magnet catch align with the pre-installed magnet on shade bottom rail.



## Remove the Shade

For cordless, fully raise the shade.  
For TDBU & Day & Night, Lower the middle rail.  
Gently pry the bracket off the head rail with a flat screwdriver as below picture.  
Remove the shade.



## Cleaning the Shade

Routine cleaning will help maintain the beauty of your shade. The shade can be cleaned by using a soft brush, vacuumed with a low suction hand-held vacuum, cleaned ultrasonically (specify that a mild solution must be used and that the head rail should never be immersed in liquid), or dampen a clean cloth with a warm water and mild detergent solution to dab the spot until it's gone (do not rub!).

## Troubleshooting

Problem	Solution
The shade will not snap into the mounting brackets	Check if mounting brackets are aligned. Refer to Step 1.
The shade will not lift	Gently pull down on the bottom rail to reactivate the cordless mechanism. Repeat if necessary. For TDBU & Day&Night, pull the midrail down fully to the bottom first and then raise the bottom rail together with midrail up.
The shade stack up unevenly	Lower the shade completely. Then raise it up to correct it. Repeat if necessary.

