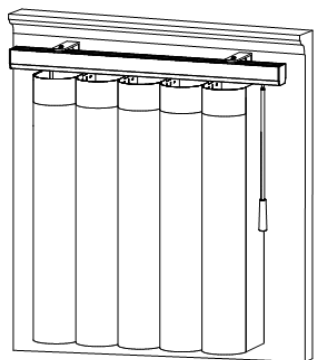


VENETA™ DualDrape™

Installation Instructions



DualDrape™

Required Tools

- Drill
- Measuring Tape
- Screwdriver
- Level
- Pencil
- Hexagon Socket



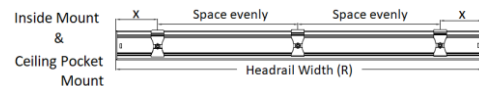
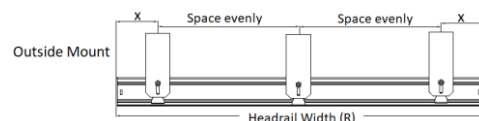
Components

Name	Drawing	Outside Mount	Inside Mount	Ceiling Pocket Mount
L Bracket		V		
C Clip		V	V	V
Nut		V		
Bolt		V		
Hex Head Screw	 For installing L bracket	V		
Flat Head Screw	 For installing ceiling pocket spacer			V
Mushroom Head Screw			V	V

Installation

- See below position chart for "X".

OM & IM & Ceiling Pocket Mount	
$R \leq 40"$	$X=4"$
$40" < R \leq 65"$	$X=10"$
$R > 65"$	$X=15"$

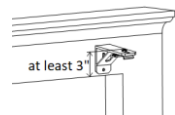


Outside Mount

- Tighten the nut and bolt after the C clip has been adjusted to the needed position on the L bracket.
Adjust to the needed position then tighten the nut

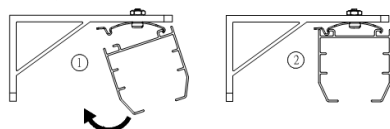


- Make sure that the distance from the top of the bracket to the edge of the window frame is at least 3" (see diagram below).

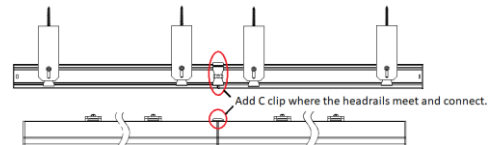


- Place brackets into position and mark where the screws will go. Secure the brackets into position using the hex head screws provided. If more brackets have been supplied, space them evenly between the first two brackets. We recommend using a level to align brackets.

- Position the top front lip of the headrail into the C clip front lip, then push the headrail up at the back to click it into place as per step 2 in diagram below.

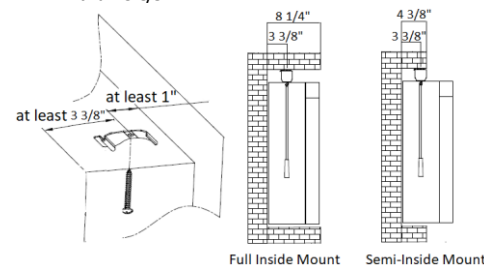


For side by side shades, add a C clip where the two headrails meet.

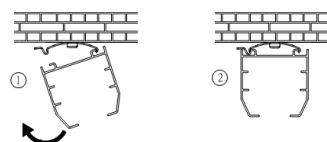


Inside Mount

- Distance from the center hole of the C clip to the front edge of the window opening should be no less than 1"; distance from the center hole of the C clip to the wall should be no less than 3 3/8".

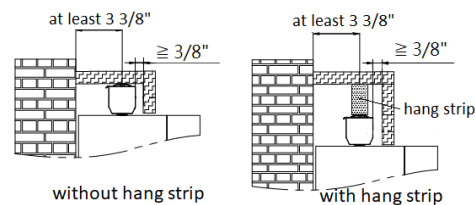


- Position the top front lip of the headrail into the C clip front lip, then push the headrail up at the back to click it into place as per step 2 in diagram below.



Ceiling Pocket Mount

- For ceiling pocket mount, the distance from the center hole of the C clip to the wall should be no less than 3 3/8".



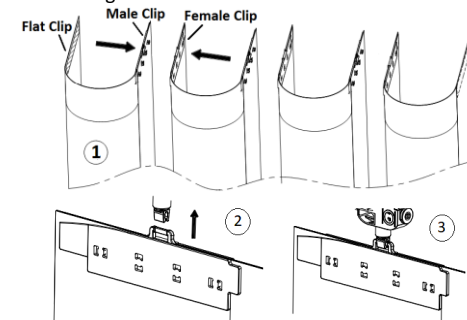
Fabric

- Assemble the fabric vanes

- Unroll the fabric. Take the fabric vanes one by one from the top of the unrolled fabric. If there are two rolls, start with roll A.
- The first vane on the top (from the top of the unrolled fabric) goes to the left end.
- Fasten the fabric vanes to one another by clasping the male and female clips together, as per step 1 in the diagram below. Then push the



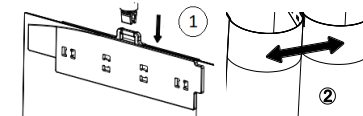
clips up to the carriers, as per steps 2 & 3 in the diagram.



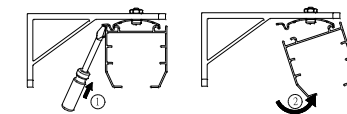
- Assemble the fabric vanes from the left to right. Repeat the steps in the diagram above to finish the installation.

Removal

- Remove the fabric vanes
Pull down the fabric clips from the carriers; then detach the male and female clips holding the vanes together.



- Remove the headrail
Insert flat screwdriver between the C clip and the headrail at the back. Tilt screwdriver forward until headrail loosens. Remove headrail from clip.



Steaming

- Fabric vane can be steamed set at "Nylon" (around 200-220°F).
- It's recommended that you save the paper tube that came with the fabric roll and place it behind the fabric vane for support while steaming.

N300972

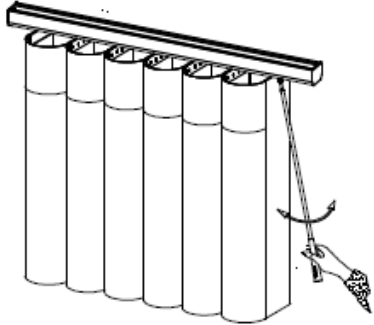
Have a question or need assistance?

Call Veneta™ Customer Service at 1-855-558-1222

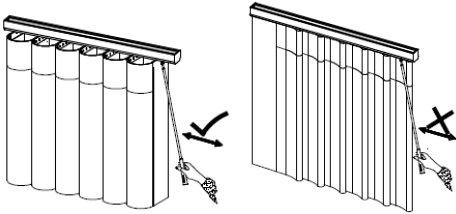
VENETA™ DualDrape™

Operation Instructions

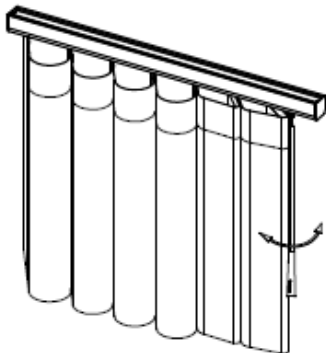
- To operate, just rotate the wand in the light or to keep privacy.



- Make sure the fabric vanes are in open position when stacking the shade open or closed.



- If the fabric vanes don't move simultaneously when rotating the wand, please keep rotating the wand to one end until you hear the "click-click" sound and then rotate the opposite direction to another end until you hear the click sound again. See if it's back to normal.



N300972

Have a question or need assistance?

Call Veneta™ Customer Service at 1-855-558-1222